

Toby Heath EngTech MICE MCIHT Director



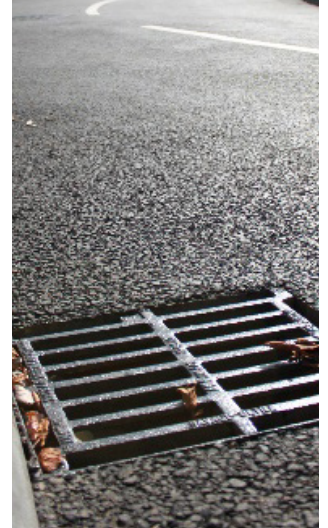
I started my career with JPP as a Junior Technician in 2007. After completing my HNC in Civil Engineering I went on to become a Technician Member of the Institution of Civil Engineers and a Member of The Chartered Institution of Highways & Transportation.

In 2019 I became a Director and am now responsible for leading all of JPP's Infrastructure teams; specialising in the design of large residential schemes, affordable housing, industrial projects and commercial developments.

As an engineer, I specialise in adoptable roads and sewers design, feasibility and land appraisals, external works design and SUDS design. I was Lead Engineer on the ICE Highly Commended Leicester Forest East Residential Scheme.

My expertise and innovation in Infrastructure Design, coupled with an extremely talented staff, means a project will be completed successfully, within budget and to program. My commitment to provide cutting edge solutions means I am constantly looking to streamline the way in which myself and my teams work, with particular focus on the utilisation of software and AutoCAD applications to automate tasks.

T: 01604 781811
M: 07393 019651
E: toby.heath@jppuk.net



NORTHAMPTON
4 Ironstone Way
Brixworth
Northampton
NN6 9UD

MANCHESTER
3rd Floor
82 King Street
Manchester
M2 4WQ

MILTON KEYNES
25 Linford Forum
Rockingham Drive
Linford Wood | Milton Keynes
MK14 6LY

POOLE
Suite 8 | Branksome Park House
Branksome Business Park
Bourne Valley Road | Poole
BH12 1ED